



## **SOLUTION:**

### **Step 1:**

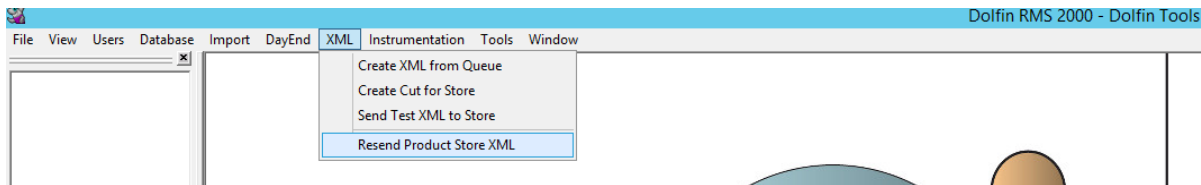
Connect to Dolfin RMS\Tools.

### **Step 2:**

Select XML.

### **Step 3:**

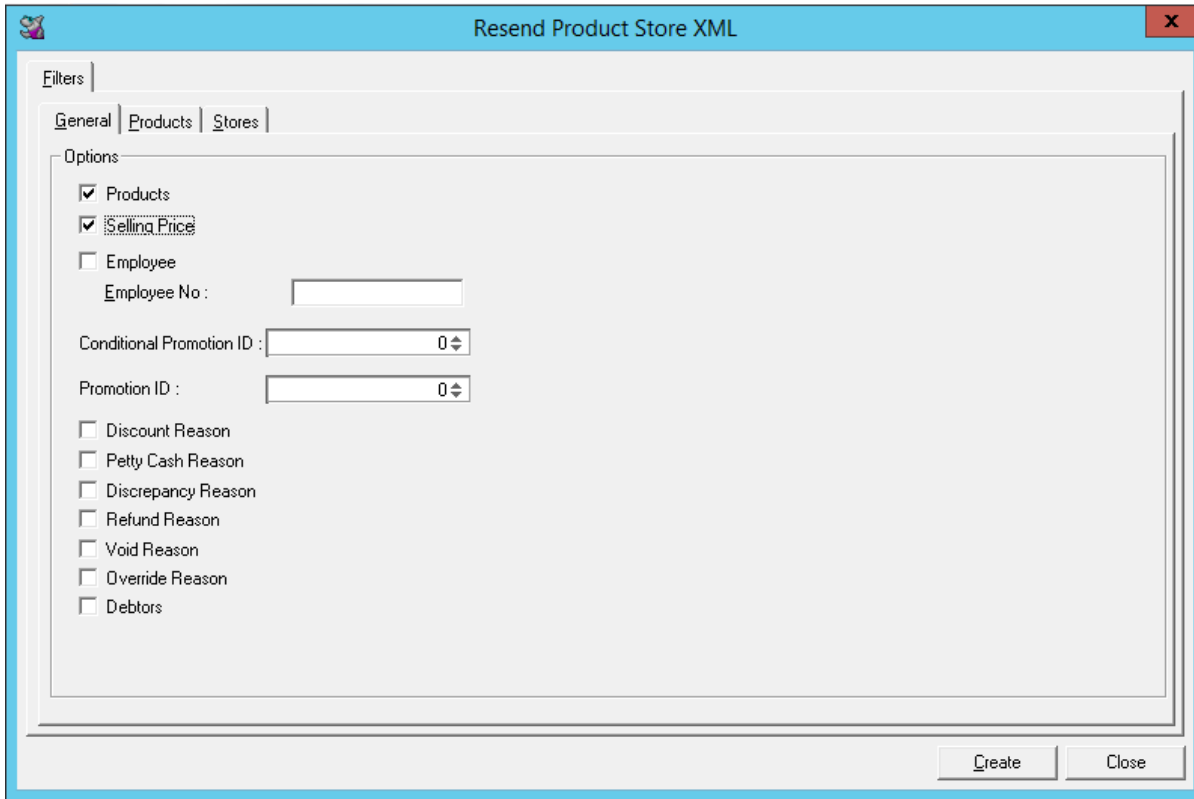
Select Resend Product Store XML.



### **Step 4:**

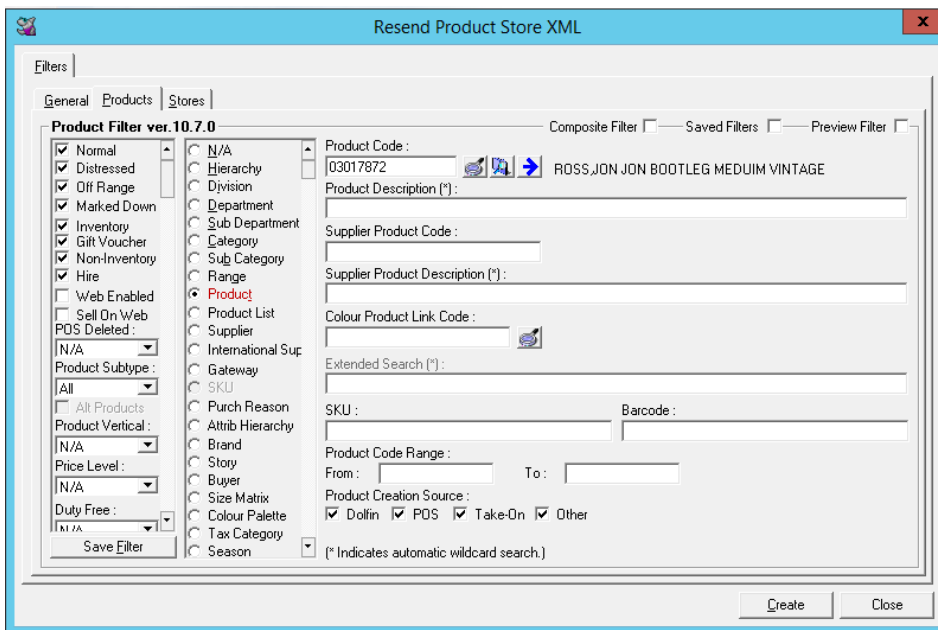
Select Products and Selling Price.

# Layby payment on DPOS



## Step 5:

Click on **Products Tab**.



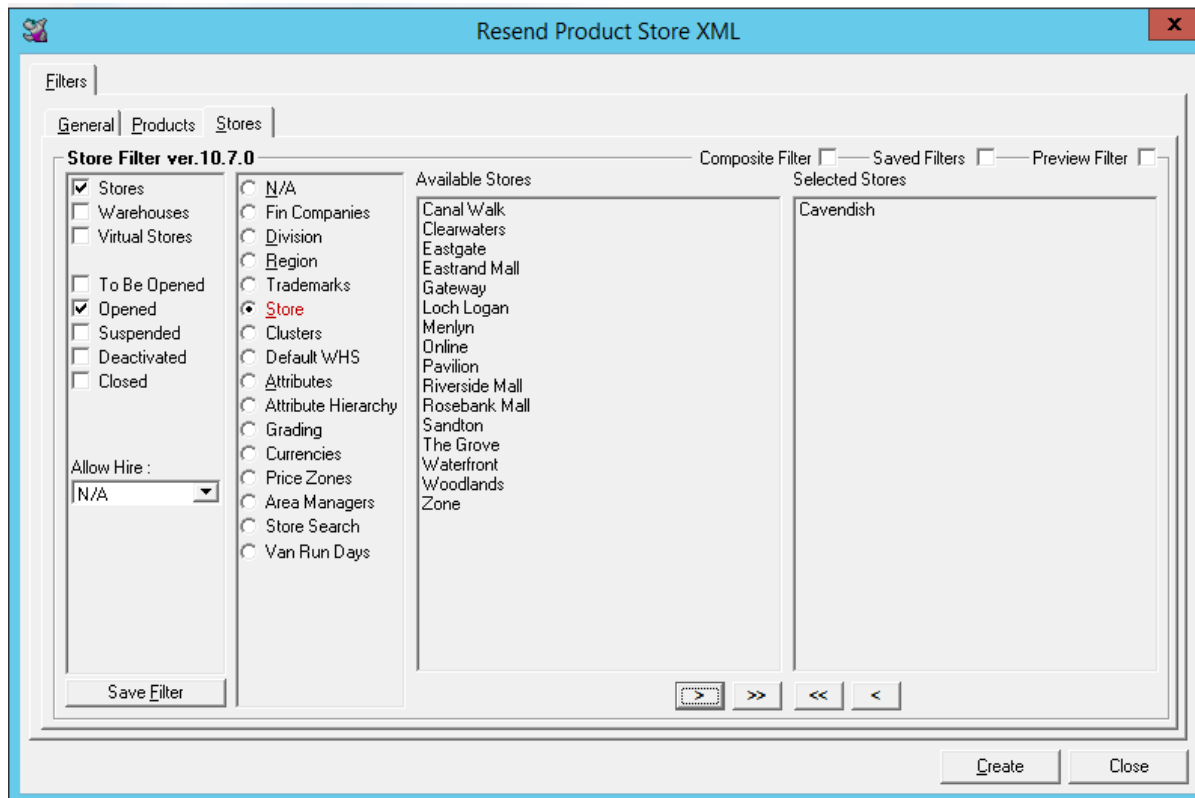
## Laybye payment on DPOS

### Step 6:

Put in the Product code and click on Stores.

### Step 7:

Select the store to send the product.



### Step 8:

Click on Create.

### Step 9:

A message 'XML created successfully' will appear.

### Step 10:

Scan the SKU code on the till and appearing now.